

SCADE Suite KCG 6.4 DO-178B&C Levels A and B Certification Kit and SCADE Suite KCG 6.4 DO-178B&C Levels C and D Certification Kit contain tool qualification data.



A distinct set of material is available for Levels A and B and Levels C and D applications. This material demonstrates to certification authorities that Esterel Technologies developed the SCADE Suite KCG code generator as a qualifiable development tool under DO-178B or as DO-330 TQL-1 tool under DO-178C.

Read more about certification data in:

- [“Certification Scope”](#)
- [“Certification Kit Data”](#)
- [“Certification Kit Management”](#)
- [“Certification Environment”](#)
- [“Certification Consulting Services”](#)
- [“Certification Plans \(Level A and B\)”](#)

---



---

## Certification Scope

---

Once acquainted with the content of the Certification Kit, users should develop their software processes based on the certification credits proposed in the Certification Kit. Esterel Technologies is ready to assist its customers in defining their certification processes and needs through consulting services.

Project plans for the user application must specify the development and verification methodology with SCADE Suite KCG and express the claimed certification credits in compliance with DO-178B or DO-178C safety objectives.

### Access to Software Life Cycle Data

Certification Kits are a subset of certification data. Customers that have the Certification Kit, as well as their certification authorities, can access all SCADE Suite KCG software life cycle data on site at Esterel Technologies upon request for certification audits purpose.

All KCG certification data are available for audit, including design, verification cases and procedures, verification results, software configuration management and software quality assurance records.

---



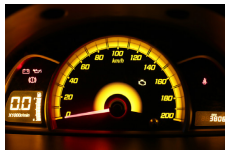
---

## Certification Kit Data

---

Each DO-178B&C Certification Kits for SCADE Suite KCG includes the following documents:

- **Compliance Analysis:** Presents the compliance of SCADE Suite KCG with DO-178B objectives at Level A and B or C and D, or with DO-330 objectives at TQL-1
- **Tool Qualification Plan (TQP):** Presents all provisions taken for the qualification of KCG Code Generator and references the other project plans
- **Tool Operational Requirements (TOR):** Describes the KCG functionality and usage. This document corresponds to the TOR-Developer as defined in DO-330.
- **Scade Language Reference Manual:** Contains the Scade language requirements
- **Tool Accomplishment Summary (TAS):** Presents the compliance status with the Tool Qualification Plan, the conditions of use, the list of unresolved defects, and tool limitations
- **Software Installation Procedure (SIP):** Contains detailed instructions for installing KCG
- **Tool Configuration Index (TCI):** Presents the tool version and configuration
- **Tool Life Cycle Environment Configuration Index (TECI):** Presents the software environment used for tool certification



---

---

## Certification Kit Management

---

- Esterel Technologies' support team sends regular Safety Status Reports that complement the Certification Kits by giving the list of all open problems and their mitigation actions in SCADE Suite KCG known at report publication date. These reports are also available on our [Support web site](#).
- Updates to the Certification Kits and Safety Status Reports are provided to customers under maintenance service

---

---

## Certification Environment

---

Users must use SCADE Suite KCG in the same environment as the environment used for certification. The Certification Kit applies to the following environment:

- SCADE Suite KCG 6.4 qualifiable on Windows XP SP3 (32-bit) and Windows 7 SP1 (64-bit)

---

---

## Certification Consulting Services

---

To help customers with certification activities, Esterel Technologies can provide specific consulting services like:

- Certification liaison support for tool certification
- Setting up SCADE Suite-based development process from system requirements to software integrated on the target
- Support for PSAC development and reviews of certification documents based on the Certification Kits
- Compiler verification preparation

---

---

## Certification Plans (Level A and B)

---

**SCADE LifeCycle DO-178B or DO-178C Certification Plans** provide a set of generic plans for the certification of embedded applications developed with SCADE Suite in compliance with respectively DO-178B Level A and B objectives or DO-178C Level A and B objectives and its DO-330 supplement.

For more information, see the DO-178B or DO-178C Certification Plans for SCADE Suite Applications Level A and B data sheets.

### Contact Information

Submit questions to Technical Support at  
[scade-support@esterel-technologies.com](mailto:scade-support@esterel-technologies.com)

Contact one of our Sales representatives at  
[scade-sales@esterel-technologies.com](mailto:scade-sales@esterel-technologies.com)

Direct general questions about Esterel Technologies to  
[scade-info@esterel-technologies.com](mailto:scade-info@esterel-technologies.com)

Discover the latest news on our products and technology at  
<http://www.esterel-technologies.com>

Copyrights © 2015 Esterel Technologies. All rights reserved.  
SCADE® and SCADE Suite® are registered trademarks of Esterel Technologies. A wholly-owned subsidiary of ANSYS, Inc. All other trademarks and tradenames contained herein are the property of their respective owners. Esterel Technologies releases this information with full intent to be 100% accurate however information contained herein is subject to change without notice and Esterel Technologies assumes no responsibility or liability as a result of any inaccuracies.

Revision: KIT-DO178C-TDS-SCS-KCG-64 - 18/03/15