

SCADE LifeCycle is a product line of the ANSYS® Embedded software family of products and solutions that includes modules combining a unique support for application lifecycle management.

This product line features requirements traceability via Application Lifecycle Management (ALM) tools, traceability from models, configuration and change management, automatic documentation generation, and project monitoring.

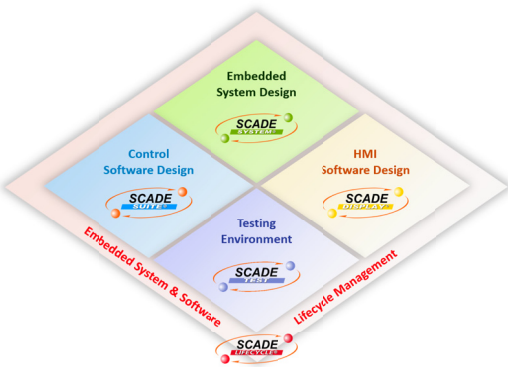


SCADE LifeCycle enhances the functionalities of SCADE System®, SCADE Suite®, SCADE Display®, SCADE® Solutions for ARINC 661, and SCADE Test with add-on modules that bridge SCADE solutions and Requirement Management tools or PLM/ALM (Product Lifecycle Management/

Application Lifecycle Management) tools. With SCADE LifeCycle, all systems and software teams involved in critical applications development can manage and control their design and verification activities across the full life cycle of their SCADE® applications.

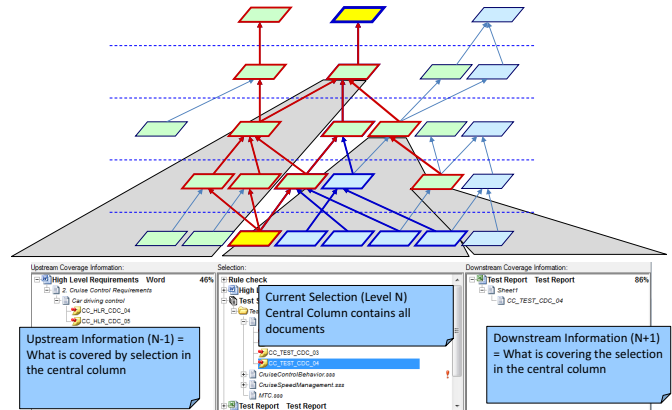
Read more about SCADE LifeCycle:

- ["Requirements Traceability"](#)
- ["Project Documentation Generation"](#)
- ["Configuration and Change Control"](#)



Requirements Traceability

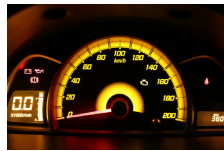
SCADE LifeCycle Application Lifecycle Management Gateway provides an integrated traceability analysis solution for safety-critical design process with SCADE System, SCADE Suite, SCADE Display, SCADE Solutions for ARINC 661, and SCADE Test:



- Connection to ALM tools: linkage to Dassault Systèmes Reqtify 2016
- Bi-directional navigation across requirements and tests
- Graphical creation of traceability links between requirements or other structured documents and SCADE System, SCADE Suite, SCADE Display, SCADE UA Page Creator for ARINC 661, and SCADE Widget Creator for ARINC 661 models
- Traceability of test cases from SCADE Test Environment projects
- Propagation of traceability information to test harnesses (RTRT, LDRA, VectorCAST)
- Compliant with DO-178B, DO-178C, EN 50128, IEC 61508, ISO 26262, and IEC 60880 standards

ANSYS

ESTEREL
Technologies



Contact Information

Submit questions to Technical Support at
scade-support@esterel-technologies.com

Contact one of our Sales representatives at
scade-sales@esterel-technologies.com

Direct general questions about Esterel Technologies to
scade-info@esterel-technologies.com

Discover the latest news on our products and technology at
<http://www.esterel-technologies.com>

Copyrights © 2015 Esterel Technologies SAS - A wholly-owned subsidiary of ANSYS, Inc. - An ISO 9011:2008 Certified Company. All rights reserved. ANSYS, SCADE, SCADE Suite, SCADE Display, SCADE System, SCADE LifeCycle, SCADE Test, and Simplorer are trademarks or registered trademarks of ANSYS, Inc. or its subsidiaries in the U.S. or other countries. All other trademarks and tradenames contained herein are the property of their respective owners. Esterel Technologies releases this information with full intent to be 100% accurate however information contained herein is subject to change without notice and Esterel Technologies assumes no responsibility or liability as a result of any inaccuracies.
Revision: SLC-TDS-R17 - 12/01/16